

# Service and Philanthropy (S&P) Board Proposal

By: Chad Pingel, SGA President

# Need for S&P Board

- ▶ Student Life issue of importance
  - ▶ Organizations, offices, and Butler culture centered around service and philanthropy
- ▶ Engagement of students wanting to serve in SGA
- ▶ Further defining campus service/philanthropy
- ▶ Expansion of current activities and meeting their needs (Spring Sports & BUDM)
- ▶ Structure to develop intentionally



# Service and Philanthropy Board: Phasing from 2014-2016

## ▶ 2014-2015

- ▶ Creation of Service and Philanthropy Grant for SGA Grants System (open Fall 2015)
- ▶ Cooperative meetings between BUDM & SSS to educate/focus on philanthropy
- ▶ Further definition/direction given to Service & Philanthropy Board (Created by LJ)
  - ▶ Partnership of leadership between SGA students leaders and Student Affairs staff

# S&P Grant (SGA Grants System)

- ▶ New grant type
- ▶ Similar to REACH grant
  - ▶ Additional funds set aside for organizations that fulfill the SGA Service and Philanthropy mission
- ▶ Approved by VP of Finance to begin
- ▶ Active in 2015-2016 year -> facilitated by SGA Finance Board and the Grants system
- ▶ Budget TBD



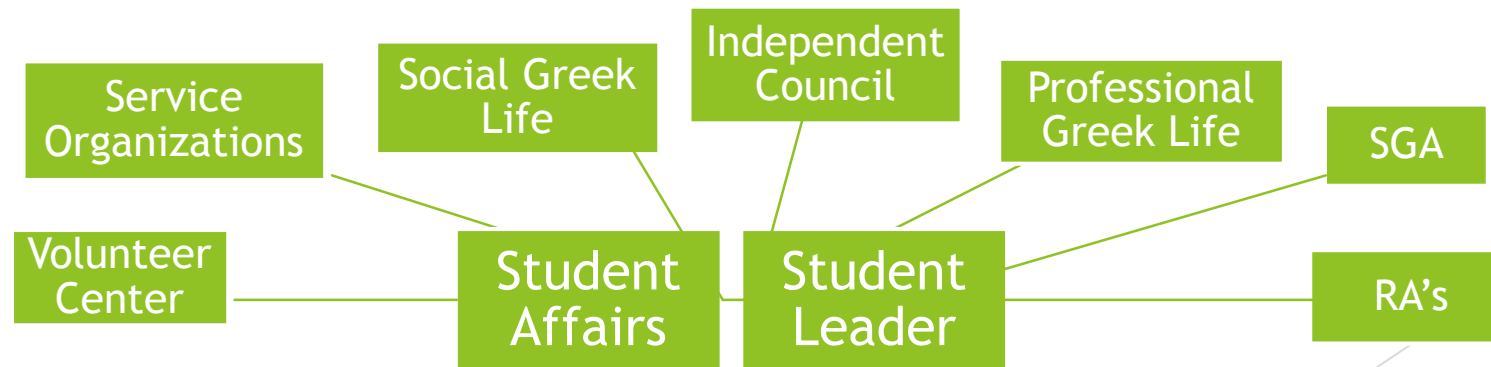
# Butler University Dance Marathon and Spring Sport Spectacular

- ▶ Two of largest on-campus philanthropies
- ▶ Often times, treated more as programs than as fundraising/philanthropic events
- ▶ Focus on fundamental purposes for organizations supported:
  - ▶ BUDM → Riley Children's Hospital
  - ▶ SSS → Indiana Special Olympics
- ▶ Joint meetings to foster education and strategic planning



# Service & Philanthropy Board

- ▶ Started in Spring 2014 -- chaired by professional student affairs staff and students to gather feedback from campus
- ▶ Acting for campus-wide interest (only meeting 3/4 times per year)
- ▶ Shared calendar of campus-wide Service & Philanthropy events
- ▶ Proposing definitions for “Service” and “Philanthropy” at Butler
- ▶ Collaboration across campus
- ▶ Coordination of fundraisers for emergency events



# Service and Philanthropy Board: Phasing from 2014-2016

## ▶ 2015-2016

- ▶ Structure formed in Spring 2015 for “Day of Service” Students Group within SGA
  - ▶ Event will take place early Fall 2015
- ▶ Ongoing development:
  - ▶ BUDM & SSS philanthropy focused
  - ▶ S&P Board provide outcomes to campus

# Day of Service - Student Group in SGA

- ▶ Day of Service event in Fall 2015, Date TBD
- ▶ Event will unite all-campus groups (faculty, staff, students, etc.)
- ▶ Group for student leaders/coordinators will be created regardless
- ▶ Student group will interact with University Steering Committee on event planning
- ▶ Structure within SGA would give benefits to group to further campus communication and recruit volunteers
- ▶ Coordinated by Caroline Huck-Watson, PuLSE Office Director





# On-Going Development (2015-2016)

- ▶ BUDM and SSS
  - ▶ Collaborative meetings continuing
  - ▶ Spreading philanthropy and fundraising training into whole-board efforts
- ▶ Service and Philanthropy Board Outcomes
  - ▶ Collaborative events for cross-campus S&P work
  - ▶ Proposed definitions for “Service” and “Philanthropy”

# Service and Philanthropy Board: Phasing from 2014-2016

## ▶ 2016-2017

- ▶ VP of Service and Philanthropy role installed (Slated in Spring 2016)
- ▶ BUDM, SSS, Day of Service moved under VP oversight
- ▶ VP of S&P becomes student chair of S&P Board

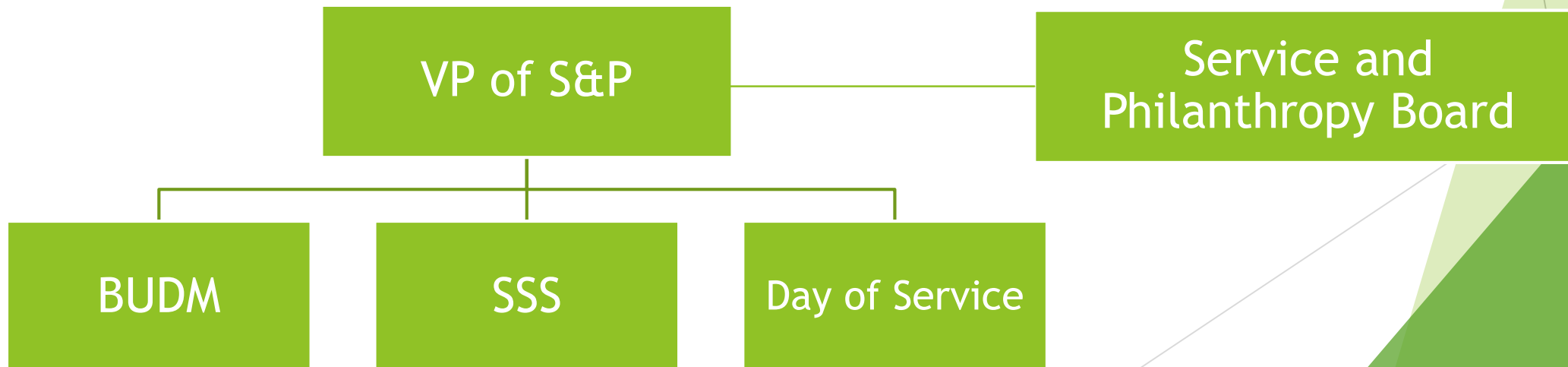
# VP of S&P

- ▶ New position for SGA Exec Board
- ▶ Would be appointed in slating by President (similar to others)
- ▶ Receive all benefits and rights of SGA VP
- ▶ Student leader to co-chair the student Service and Philanthropy Board
- ▶ Will provide supervisory and oversight with Spring Sports and BUDM



# S&P Structure Composition

- ▶ Purpose: “develop and implement programs and opportunities for Butler students to become involved with local and national community service and philanthropic programs”
- ▶ Butler University Dance Marathon (BUDM) -> Program Board
- ▶ Spring Sports Spectacular (SSS) -> Program Board
- ▶ Day of Service -> new campus-wide program (student group)





# Service and Philanthropy Board: Phasing from 2014-2016

## ▶ 2014-2015

- ▶ Creation of Service and Philanthropy Grant for SGA Grants System (open Fall 2015)
- ▶ Cooperative meetings between BUDM & SSS to educate/focus on philanthropy
- ▶ Further definition/direction given to Service & Philanthropy Board (LJ)
  - ▶ Partnership of leadership between SGA students leaders and Student Affairs staff

## ▶ 2015-2016

- ▶ Structure formed for “Day of Service” Students Group within SGA (Call-out in Spring 2015)
- ▶ Ongoing development: BUDM & SSS philanthropy focused; S&P Board provide outcomes to campus

## ▶ 2016-2017

- ▶ VP of Service and Philanthropy role installed (Slated in Spring 2016)
- ▶ BUDM, SSS, Day of Service moved under VP oversight
- ▶ VP of S&P becomes student chair of S&P Board

## Entertain Formal Motion from SGA Assembly

- ▶ “I move to approve the phasing timeline of the SGA Service and Philanthropy Board between 2014-2016 as proposed by the 2014-2015 SGA Executive Board.”